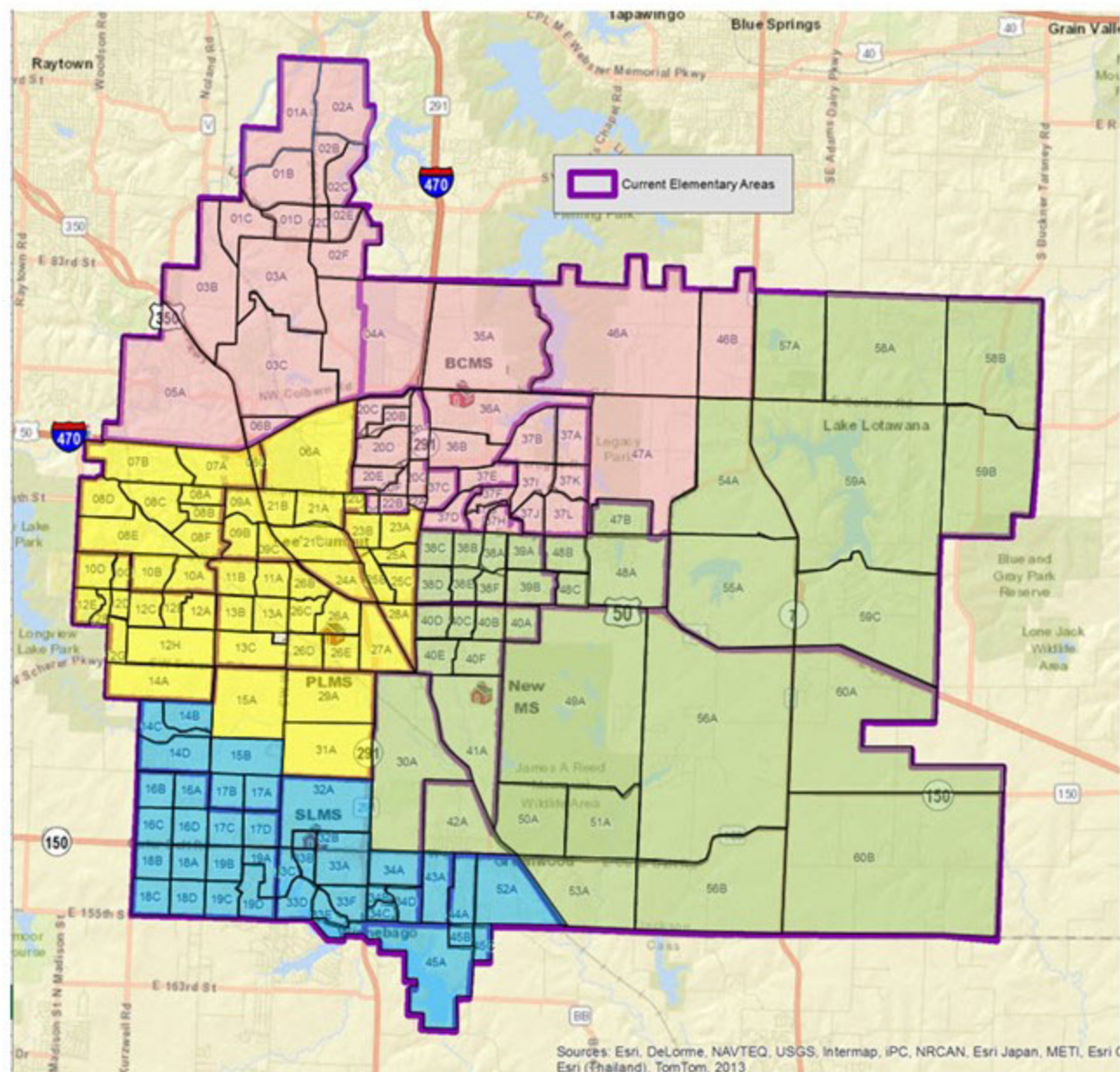




LEE'S SUMMIT
R-7 SCHOOLS
Learning for Life

Lee's Summit School District

Draft Option: BLUE



Middle School Boundary Planning Map

School	Grid	Color
Bernard Campbell Middle School	36A	Red
Pleasant Lea Middle School	26E	Yellow
Summit Lakes Middle School	32B	Blue
New Middle School	41A	Green



Lee's Summit School District

Draft Option: **BLUE**

Enrollment Projection

Middle Schools (Grades 6 - 8)	2022	2023	2024	2025	2026	2027	2028	2029	2030
Bernard Campbell Middle School	1,071	1,125	1,124	1,133	1,116	1,132	1,151	1,156	1,145
Pleasant Lea Middle School	1,018	1,003	988	1,008	1,040	1,077	1,115	1,115	1,107
Summit Lakes Middle School	1,034	1,063	1,070	1,133	1,126	1,165	1,185	1,206	1,207
New Middle School	1,044	1,043	1,100	1,163	1,171	1,164	1,171	1,195	1,204
Totals	4,167	4,234	4,282	4,437	4,453	4,538	4,622	4,672	4,663

Criteria Application

Enrollment difference in 2022	53 students
Enrollment difference in 2030	100 students
Transportation implication	Feasible
Elementary to middle school feeders	Split school(s) include: MAE, PVE, TRE, HHE, and WLE SLMS and BCMS are direct feeders, PLMS splits to LSHS,
Middle to high school feeders	LSN, and LSW, MS#4 feeds to all three high schools
Free and reduced percentage *	BCMS 25.1%, Middle School #4 11.8%, PLMS 16.2%, SLMS 7.3%
Number of 7th grade students impacted by change in 2022	449

* Overall district free/reduced percentages are under reported because of the COVID pandemic and the government free lunch initiative.