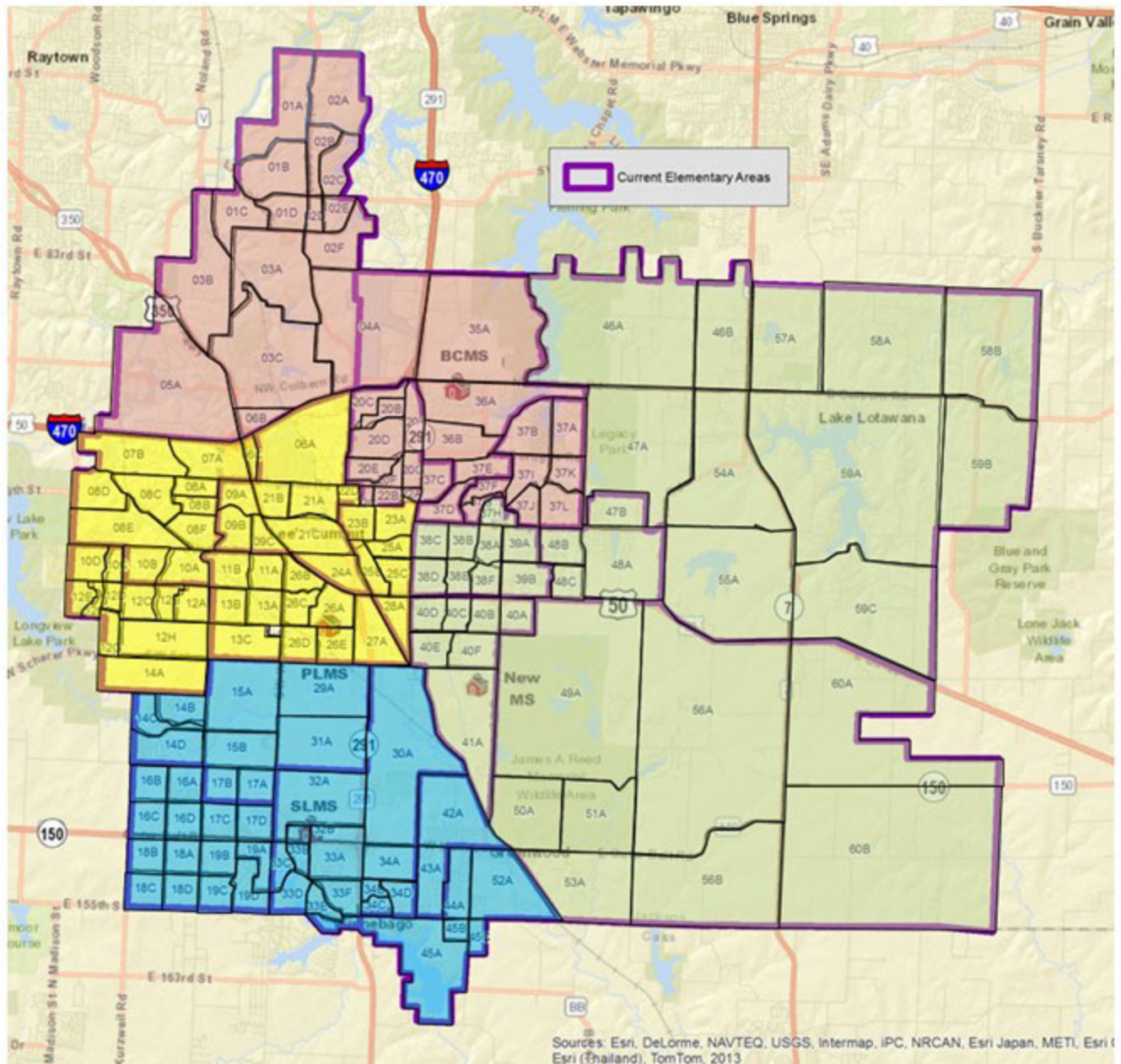




LEE'S SUMMIT
R-7 SCHOOLS
Learning for Life

Lee's Summit School District

Draft Option: GREEN



Middle School Boundary Planning Map

School	Grid
Bernard Campbell Middle School	36A
Pleasant Lea Middle School	26E
Summit Lakes Middle School	32B
New Middle School	41A



Lee's Summit School District

Draft Option: **GREEN**

Enrollment Projection

Middle Schools (Grades 6 - 8)	2022	2023	2024	2025	2026	2027	2028	2029	2030
Bernard Campbell Middle School	985	1,024	1,013	1,003	982	993	1,014	1,013	1,004
Pleasant Lea Middle School	1,018	1,003	988	1,007	1,036	1,070	1,105	1,102	1,091
Summit Lakes Middle School	1,074	1,110	1,115	1,180	1,187	1,235	1,273	1,293	1,298
New Middle School	1,091	1,098	1,167	1,246	1,249	1,240	1,230	1,264	1,270
Totals	4,168	4,235	4,283	4,436	4,454	4,538	4,622	4,672	4,663

Criteria Application

Enrollment difference in 2022	106 students
Enrollment difference in 2030	294 students
Transportation implication	Feasible
Elementary to middle school feeders	Split school(s) include: WLE
Middle to high school feeders	SLMS and BCMS are direct feeders, PLMS feeds to all three high schools, MS#4 feeds LSH and LSN
Free and reduced percentage *	BCMS 24.8%, Middle School #4 12.5%, PLMS 16.2%, SLMS 7.8%
Number of 7th grade students impacted by change in 2022	451

* Overall district free/reduced percentages are under reported because of the COVID pandemic and the government free lunch initiative.

Elementary Breakdown

Middle School	Elementary Schools
Bernard Campbell Middle School	HGE, MLE, RHE, UWE
Pleasant Lea Middle School	CCE, LFE, LSE, PLE, WVE
Summit Lakes Middle School	GWE, HHE, SPE, TRE, WLE
New Middle School	HPE, MAE, PVE, SVE, WLE