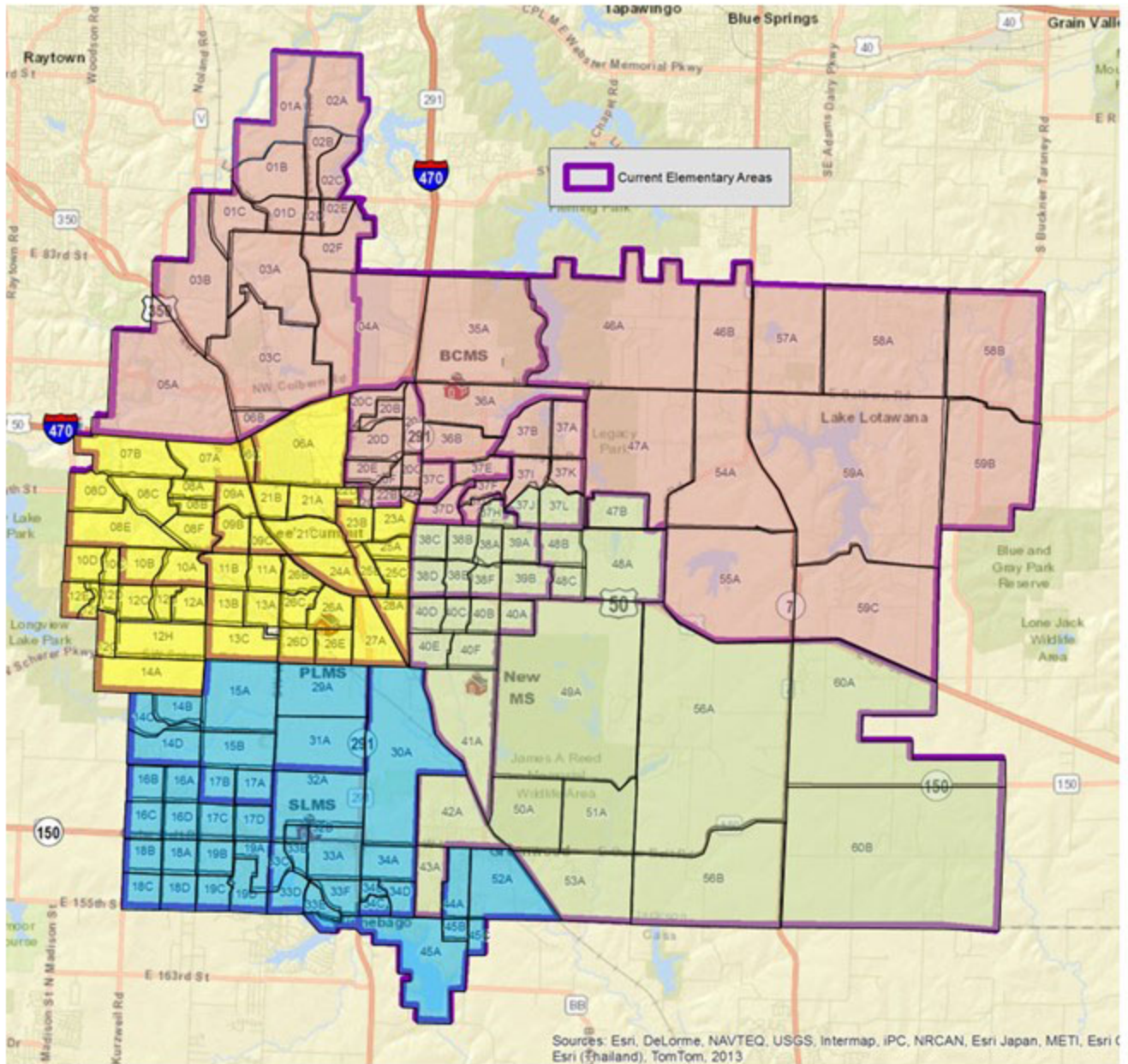




# Lee's Summit School District

## Draft Option: PURPLE



Middle School Boundary Planning Map

School	Grid	Color
Bernard Campbell Middle School	36A	Red
Pleasant Lea Middle School	26E	Yellow
Summit Lakes Middle School	32B	Blue
New Middle School	41A	Green



# Lee's Summit School District

## Draft Option: **PURPLE**

### Enrollment Projection

Middle Schools (Grades 6 - 8)	2022	2023	2024	2025	2026	2027	2028	2029	2030
Bernard Campbell Middle School	1,109	1,152	1,161	1,195	1,208	1,235	1,269	1,281	1,274
Pleasant Lea Middle School	1,024	1,006	993	1,014	1,041	1,073	1,105	1,102	1,091
Summit Lakes Middle School	971	1,008	1,008	1,076	1,069	1,113	1,134	1,161	1,170
New Middle School	1,063	1,068	1,121	1,152	1,136	1,116	1,114	1,127	1,128
<b>Totals</b>	<b>4,167</b>	<b>4,234</b>	<b>4,283</b>	<b>4,437</b>	<b>4,454</b>	<b>4,537</b>	<b>4,671</b>	<b>4,671</b>	<b>4,663</b>

### Criteria Application

Enrollment difference in 2022	138 students
Enrollment difference in 2030	183 students
Transportation implication	Feasible
Elementary to middle school feeders	Split school(s) include: RHE SLMS and BCMS are direct feeders, PLMS and MS#4 feeds to all
Middle to high school feeders	three high schools
Free and reduced percentage *	BCMS 23.1%, Middle School#4 12.9%, PLMS 13.1%, SLMS 7.2%
Number of 7th grade students impacted by change in 2022	446

\* Overall district free/reduced percentages are under reported because of the COVID pandemic and the government free lunch initiative.